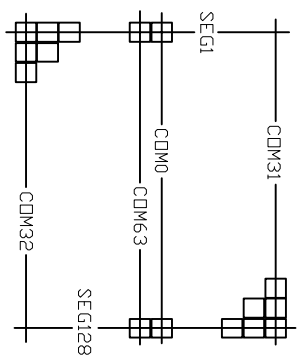
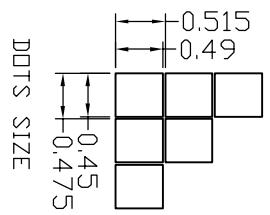
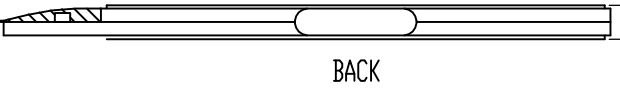
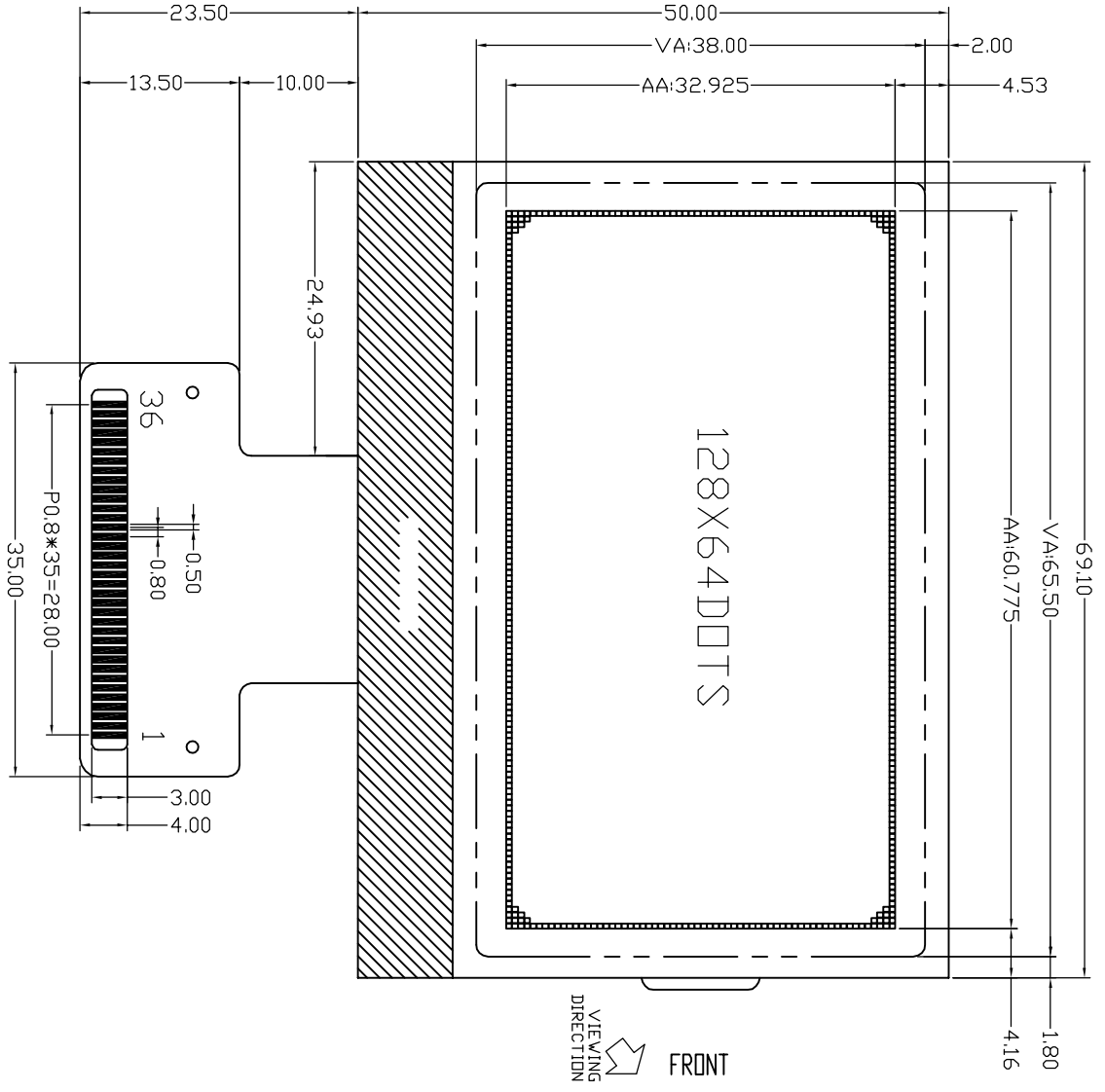


PIN SYMBOL	PIN	FUNCTION	SYMBOL
1	NC	19	CAP3P
2	NC	20	CAP1N
3	CS1	21	CAP1P
4	RES	22	CAP2P
5	A0	23	CAP2N
6	WR	24	NC
7	RD	25	V1
8	D0	26	V2
9	D1	27	V3
10	D2	28	V4
11	D3	29	V0
12	D4	30	VR
13	D5	31	NC
14	D6	32	C86
15	D7	33	PS
16	VDD	34	NC
17	VSS	35	IRS
18	VOUT	36	NC



- Specifications:
- 1) LCD Display Type : STN,Positive,
 - 2) Polarizer : Transmissive
 - 3) Viewing Direction : 6 O'Clock
 - 4) Drive Method : 1/64Duty; 1/9Bias
 - 5) Operating Voltage : VDD=3.3V;Vop=9.0V
 - 6) Operating Temperature : -10°C~60°C
 - 7) Storage Temperature : -20°C~70°C
 - 8) Controller/Driver IC : ST7565
 - 9) Backlight :



Customers Approval With Signature And Chop
 Approved By _____ Date _____



Dwg Title	T12864C002-STN-CK08			REV	00
Scale	Unit	Tol.	Dwg No.		
mm	mm	±0.2	03122253		
Drawn	Checked	Approved	Date		
Lmx			2010-03-12		